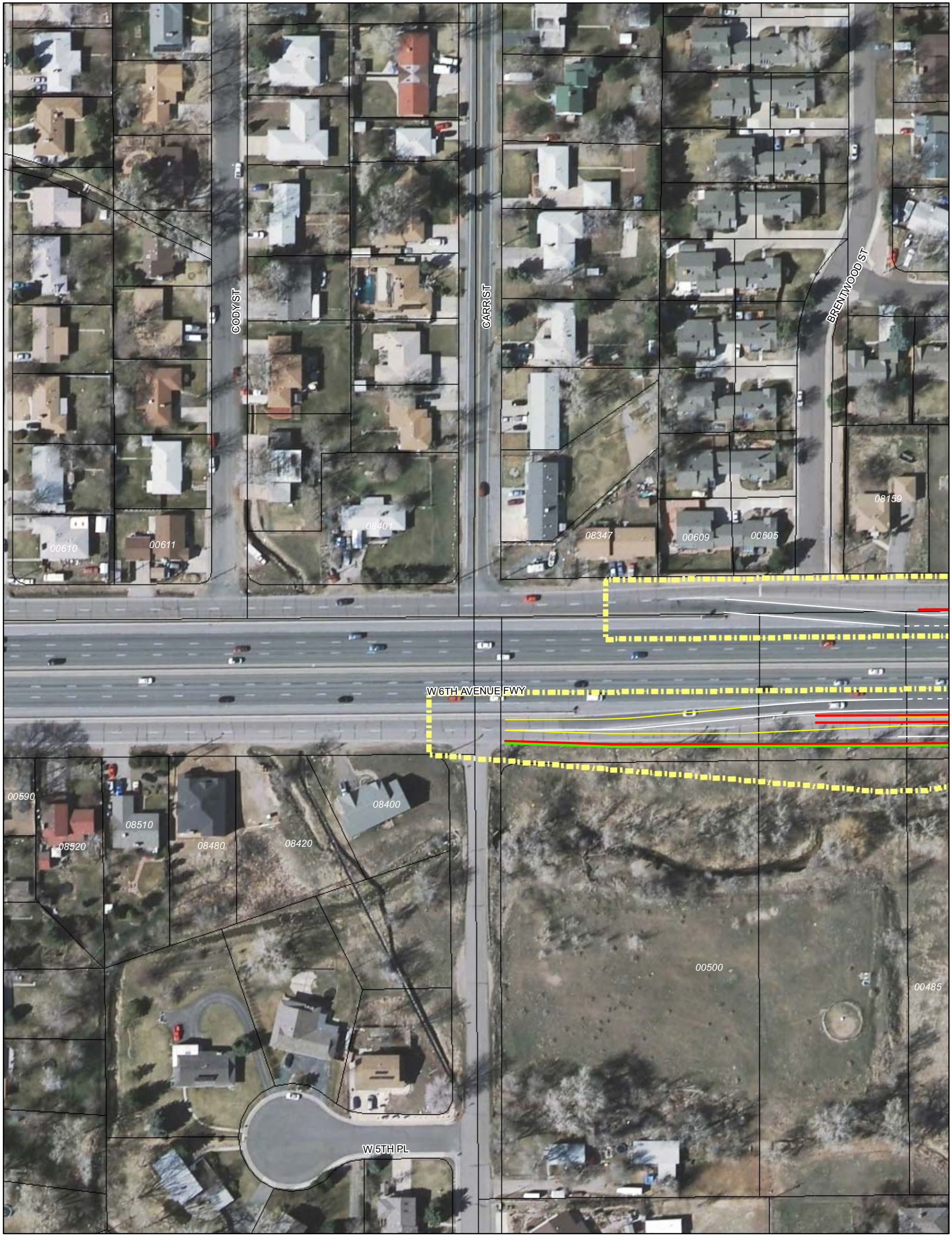


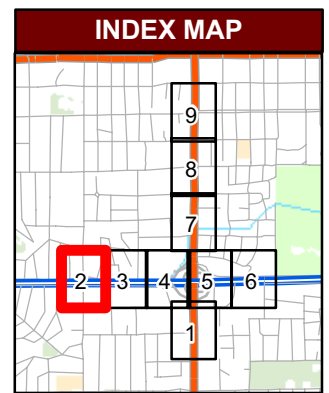
US 6 and Wadsworth Environmental Assessment Preferred Alternative Preliminary Design MAP 1







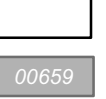

Notes:
 1. Construction limits reflect the estimated edge of improvements including a 10-foot buffer for the construction work zone.
 2. Additional impacts, beyond those shown, may result from noise walls & water quality treatment features. The locations of these features are still being studied.

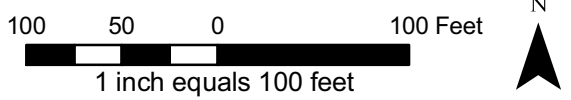




US 6 and Wadsworth Environmental Assessment Preferred Alternative Preliminary Design MAP 2

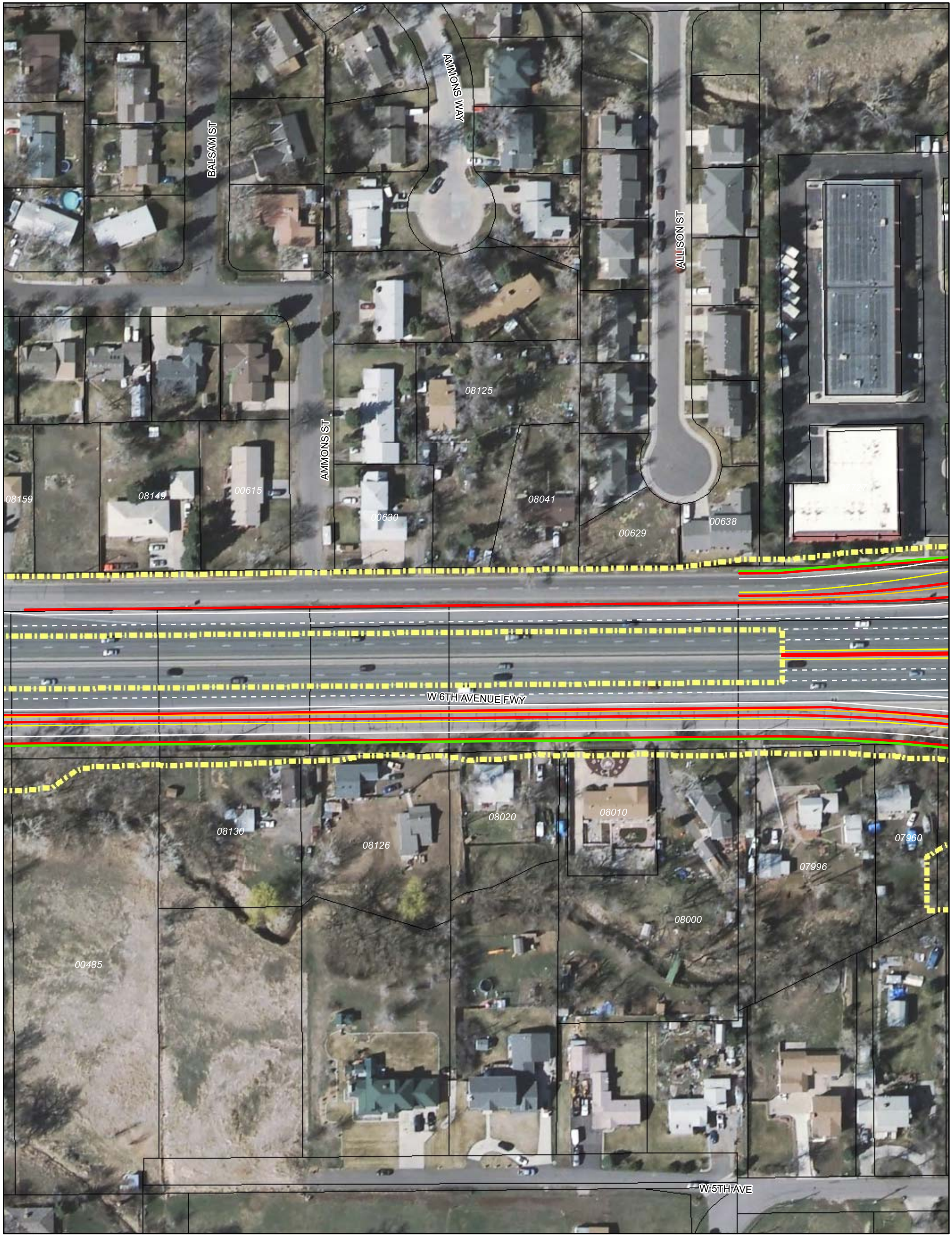


- | | |
|---|---|
|  Sidewalk |  Drainage Channel |
|  Curb and Gutter |  Detention Pond |
|  Lane Striping |  Jefferson County Assessor Parcel Data |
|  Construction Limits |  Street Address of Property (with leading zeros) |
|  Bridge Outline | |

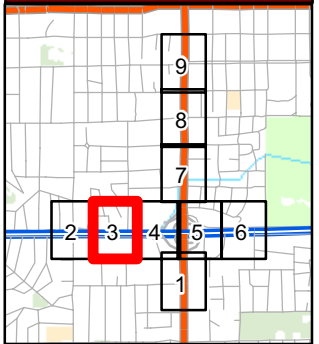


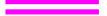






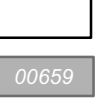

Notes:
 1. Construction limits reflect the estimated edge of improvements including a 10-foot buffer for the construction work zone.
 2. Additional impacts, beyond those shown, may result from noise walls & water quality treatment features. The locations of these features are still being studied.

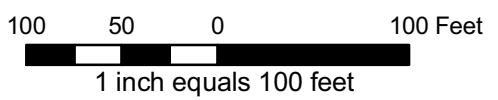




INDEX MAP



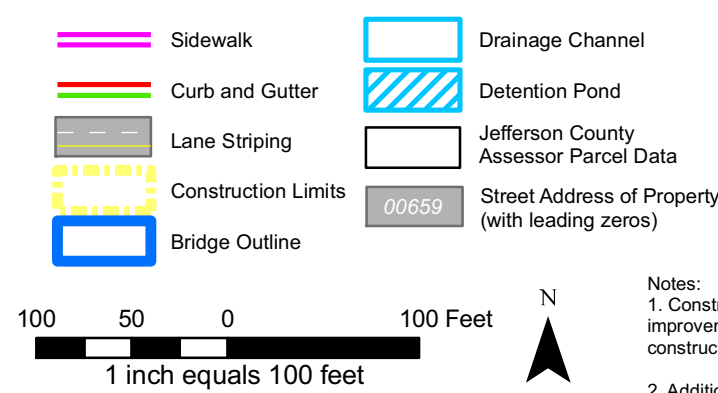
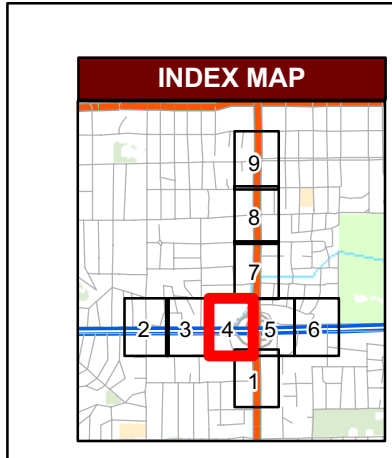
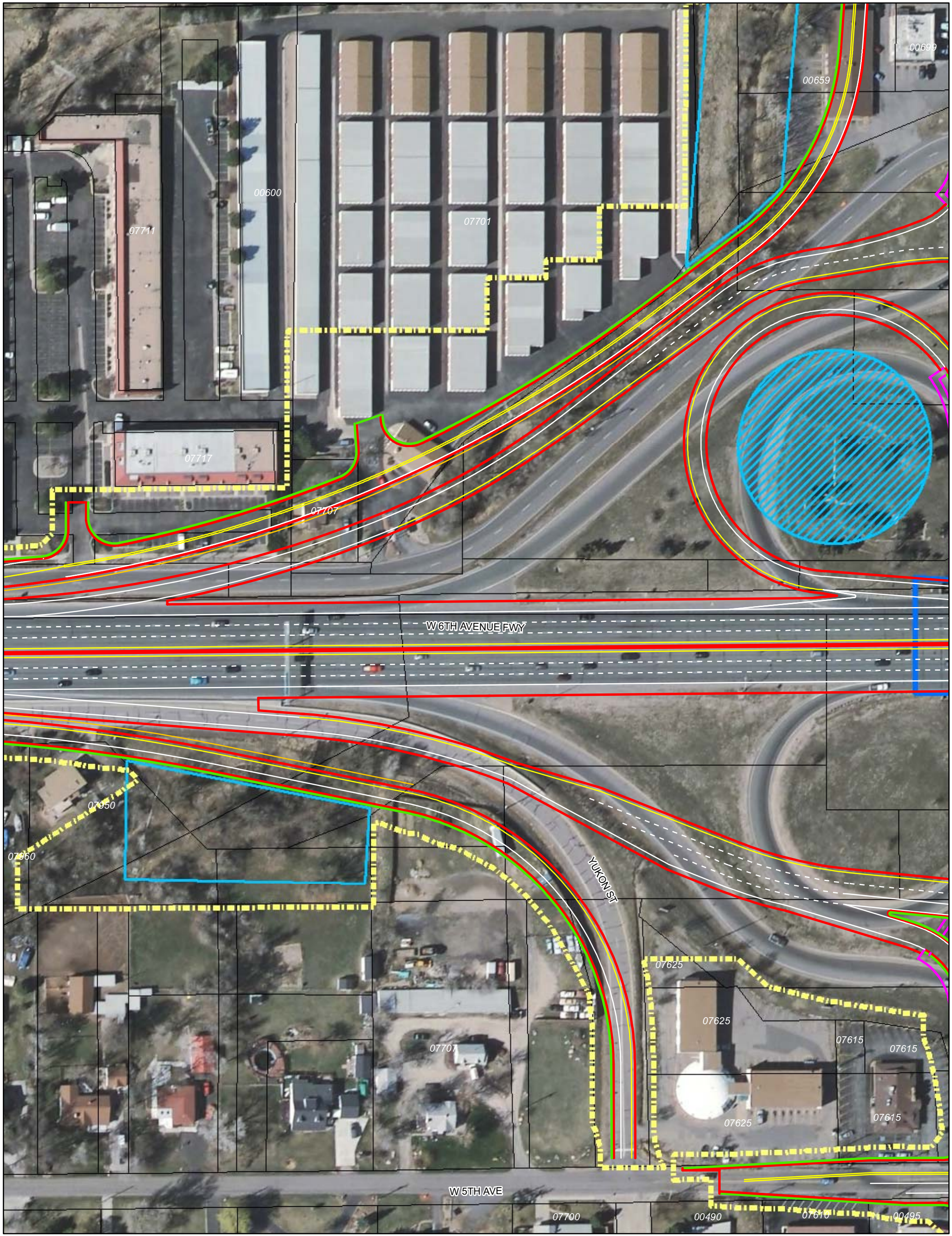
- | | |
|---|---|
|  Sidewalk |  Drainage Channel |
|  Curb and Gutter |  Detention Pond |
|  Lane Striping |  Jefferson County Assessor Parcel Data |
|  Construction Limits |  Street Address of Property (with leading zeros) |
|  Bridge Outline | |



**US 6 and Wadsworth
Environmental Assessment
Preferred Alternative Preliminary Design
MAP 3**

- Notes:
1. Construction limits reflect the estimated edge of improvements including a 10-foot buffer for the construction work zone.
 2. Additional impacts, beyond those shown, may result from noise walls & water quality treatment features. The locations of these features are still being studied.

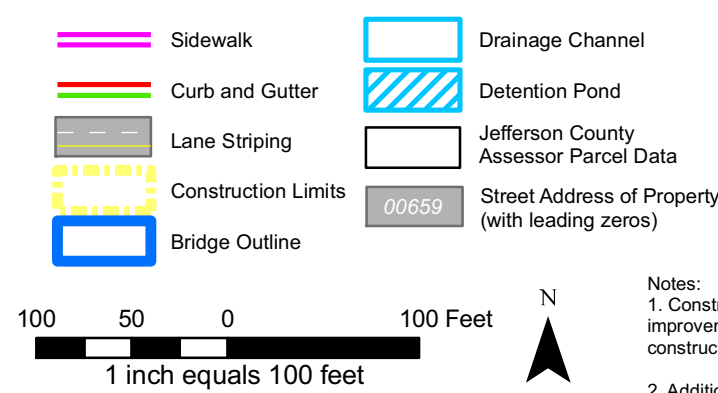
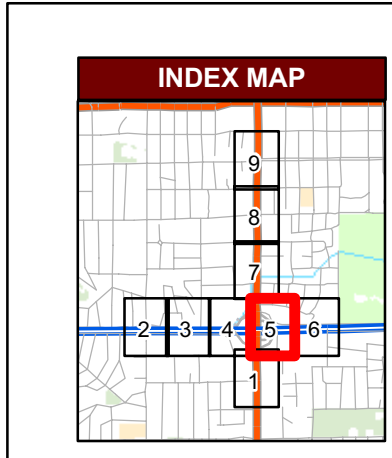
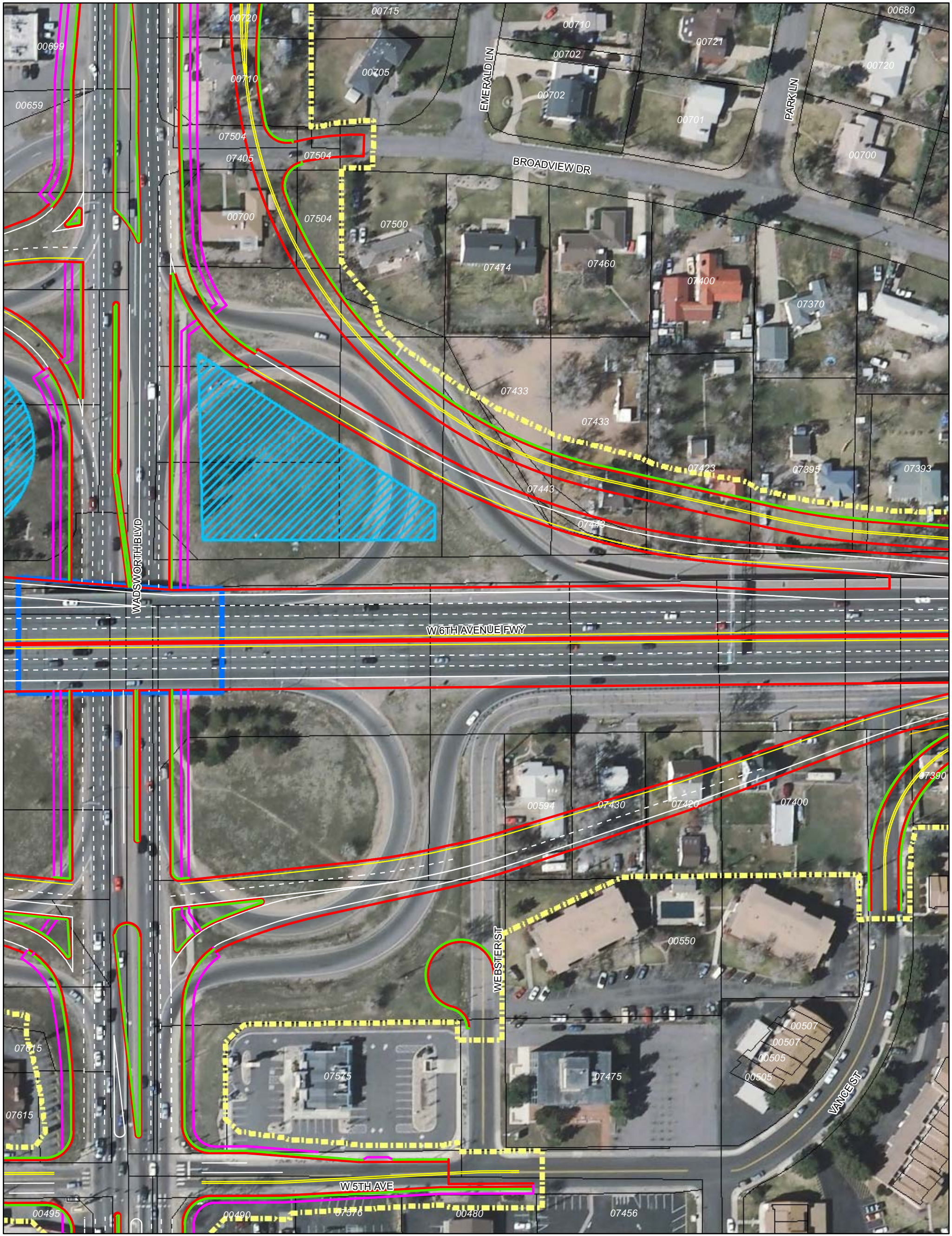




US 6 and Wadsworth Environmental Assessment Preferred Alternative Preliminary Design MAP 4

Notes:
 1. Construction limits reflect the estimated edge of improvements including a 10-foot buffer for the construction work zone.
 2. Additional impacts, beyond those shown, may result from noise walls & water quality treatment features. The locations of these features are still being studied.

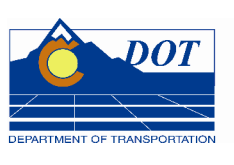


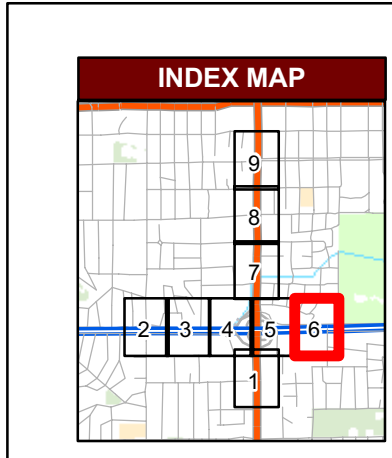
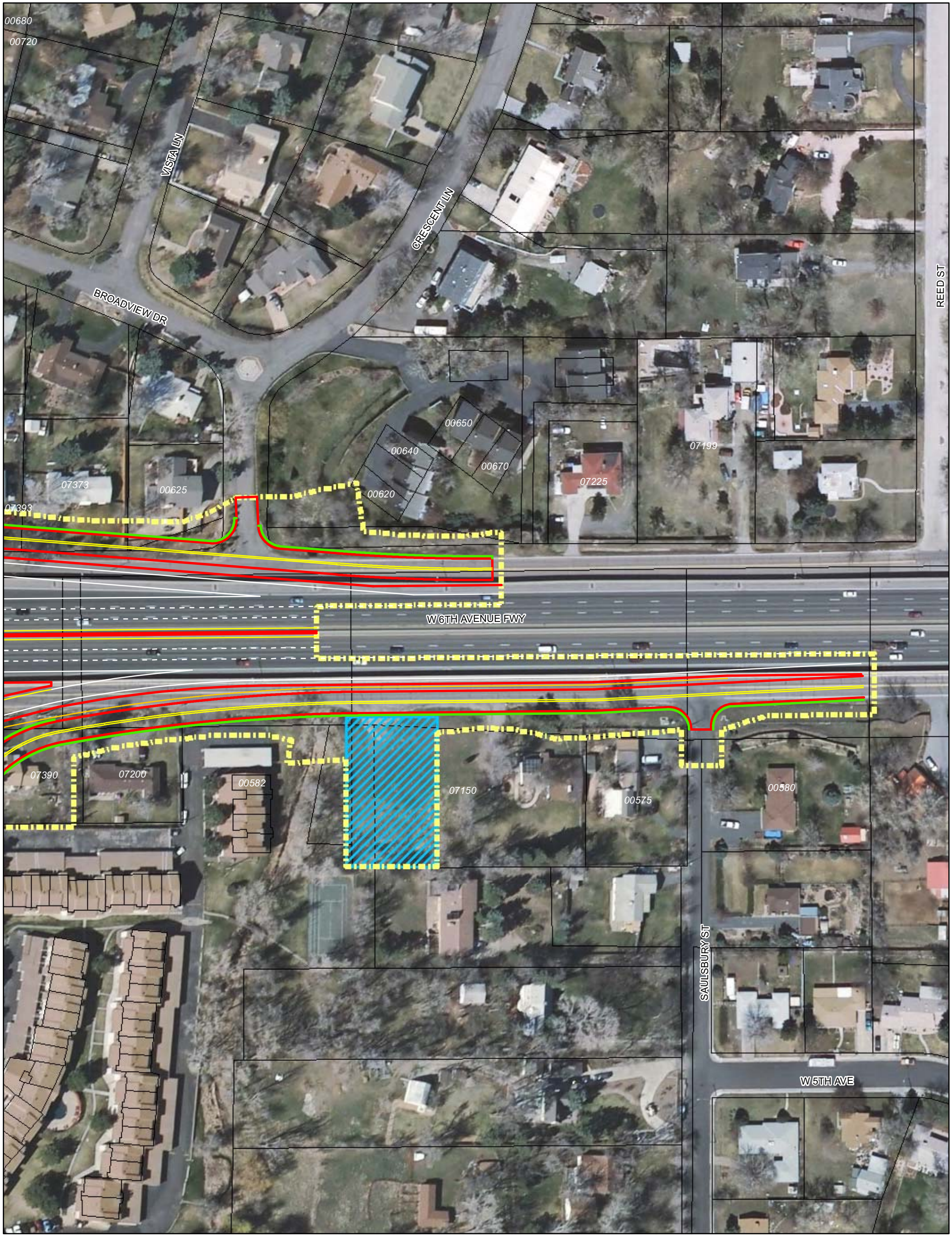


US 6 and Wadsworth Environmental Assessment Preferred Alternative Preliminary Design MAP 5

Notes:

1. Construction limits reflect the estimated edge of improvements including a 10-foot buffer for the construction work zone.
2. Additional impacts, beyond those shown, may result from noise walls & water quality treatment features. The locations of these features are still being studied.



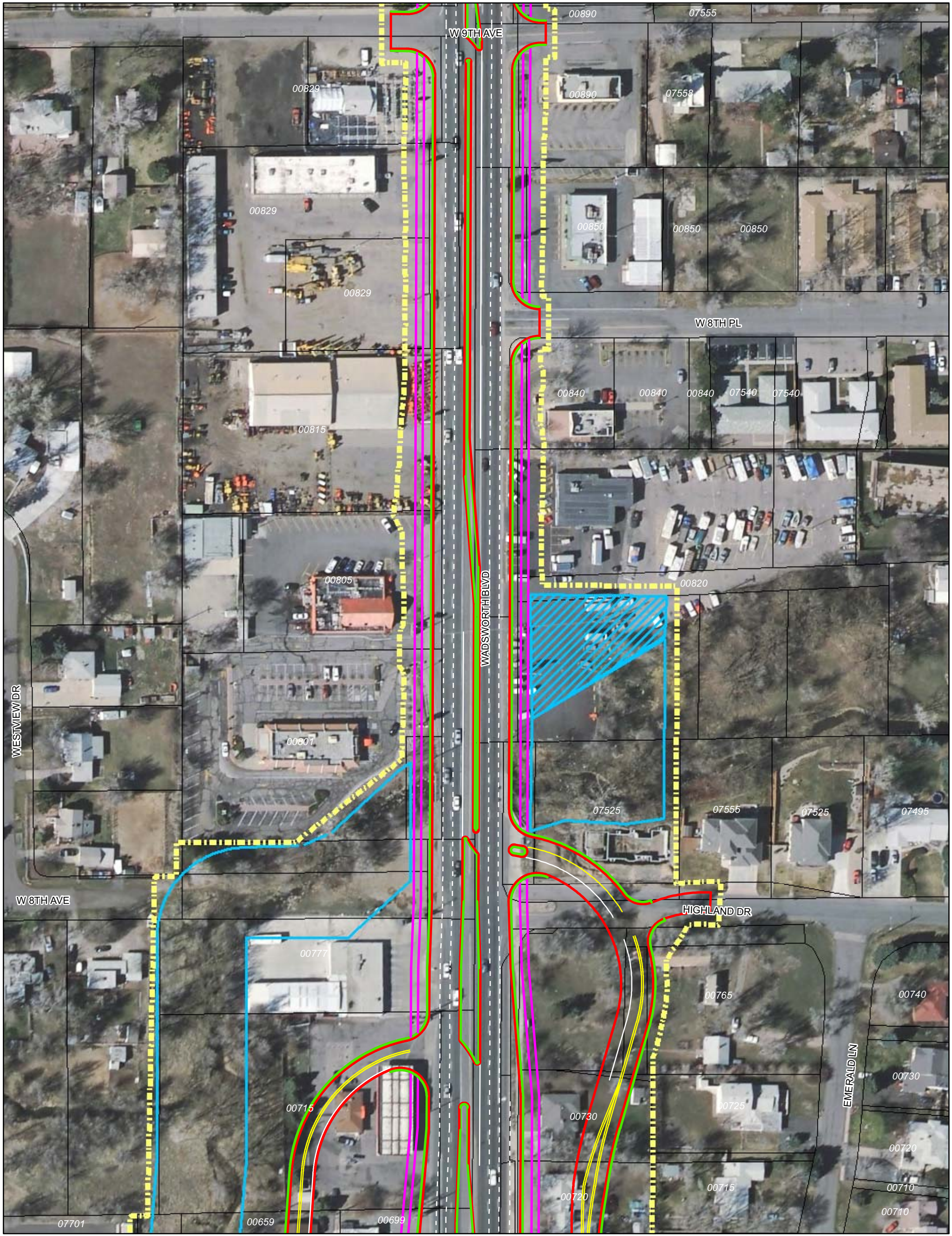


- | | |
|---------------------|---|
| Sidewalk | Drainage Channel |
| Curb and Gutter | Detention Pond |
| Lane Striping | Jefferson County Assessor Parcel Data |
| Construction Limits | Street Address of Property (with leading zeros) |
| Bridge Outline | |

US 6 and Wadsworth Environmental Assessment Preferred Alternative Preliminary Design MAP 6

Notes:
 1. Construction limits reflect the estimated edge of improvements including a 10-foot buffer for the construction work zone.
 2. Additional impacts, beyond those shown, may result from noise walls & water quality treatment features. The locations of these features are still being studied.





INDEX MAP

Sidewalk	Drainage Channel
Curb and Gutter	Detention Pond
Lane Striping	Jefferson County Assessor Parcel Data
Construction Limits	Street Address of Property (with leading zeros)
Bridge Outline	

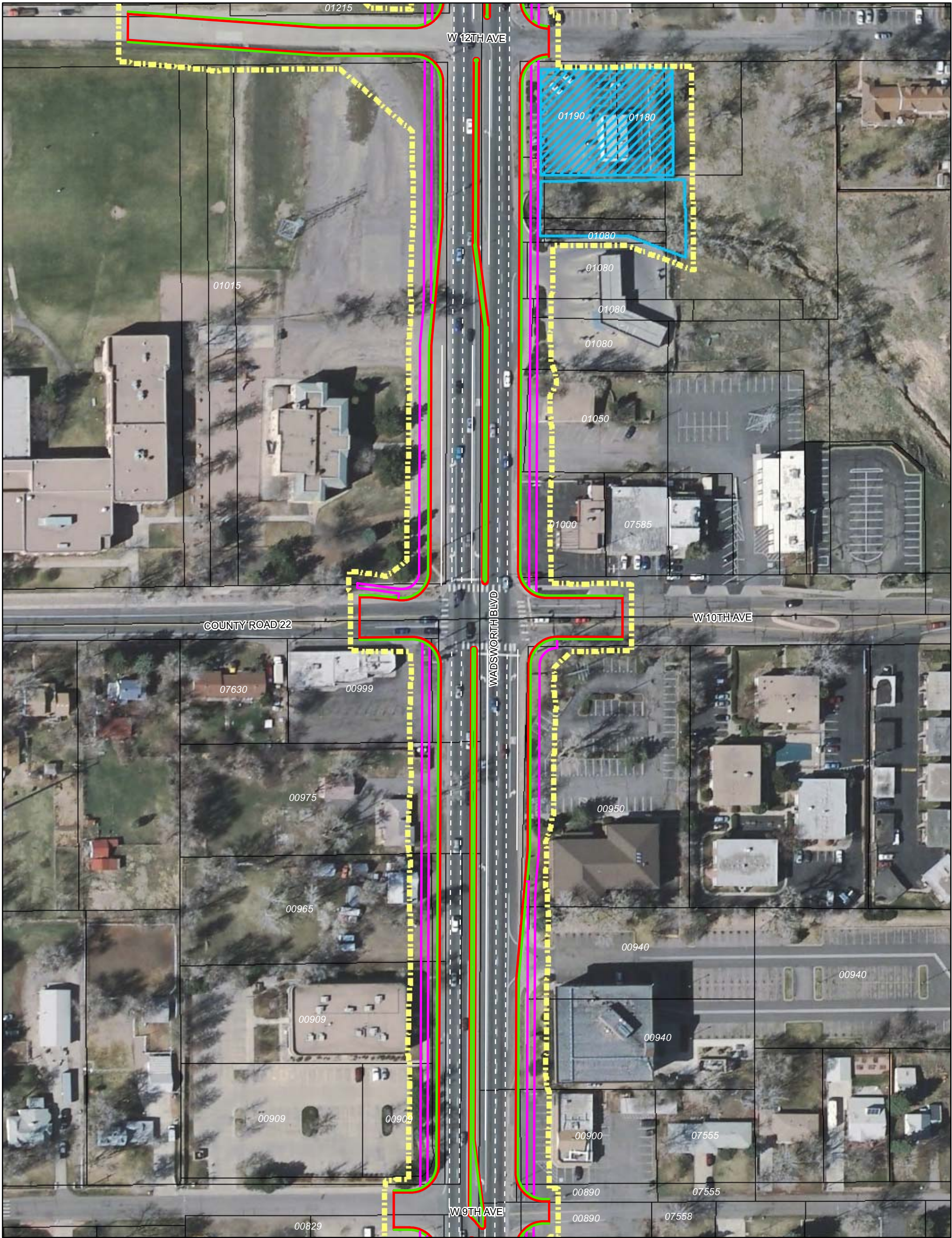
US 6 and Wadsworth Environmental Assessment Preferred Alternative Preliminary Design MAP 7

Notes:

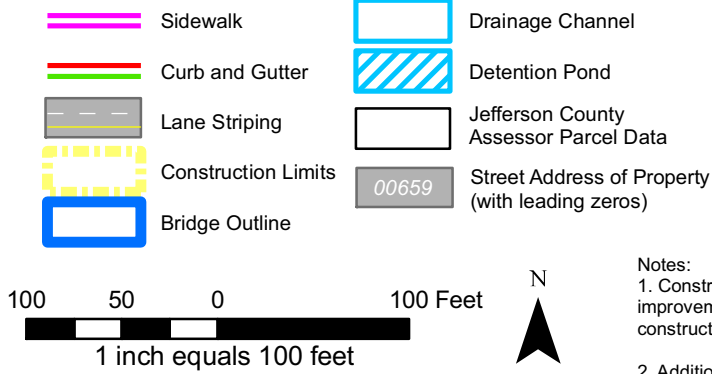
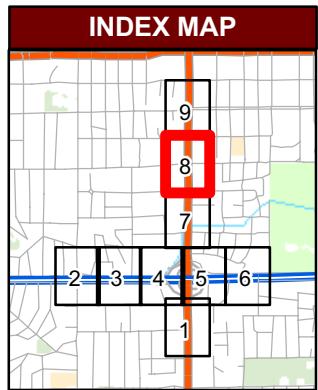
- Construction limits reflect the estimated edge of improvements including a 10-foot buffer for the construction work zone.
- Additional impacts, beyond those shown, may result from noise walls & water quality treatment features. The locations of these features are still being studied.

Source: Jefferson County Assessor, 2007. CH2M Hill, 2008.

DEN \COBRA\GIS\PROJECTS\6TH_WADSWORTH\MAPFILES\ATLAS\PARCELS\MAPBOOK_PUBLICMEETING_061208.MXD 6/16/2008 10:18:40



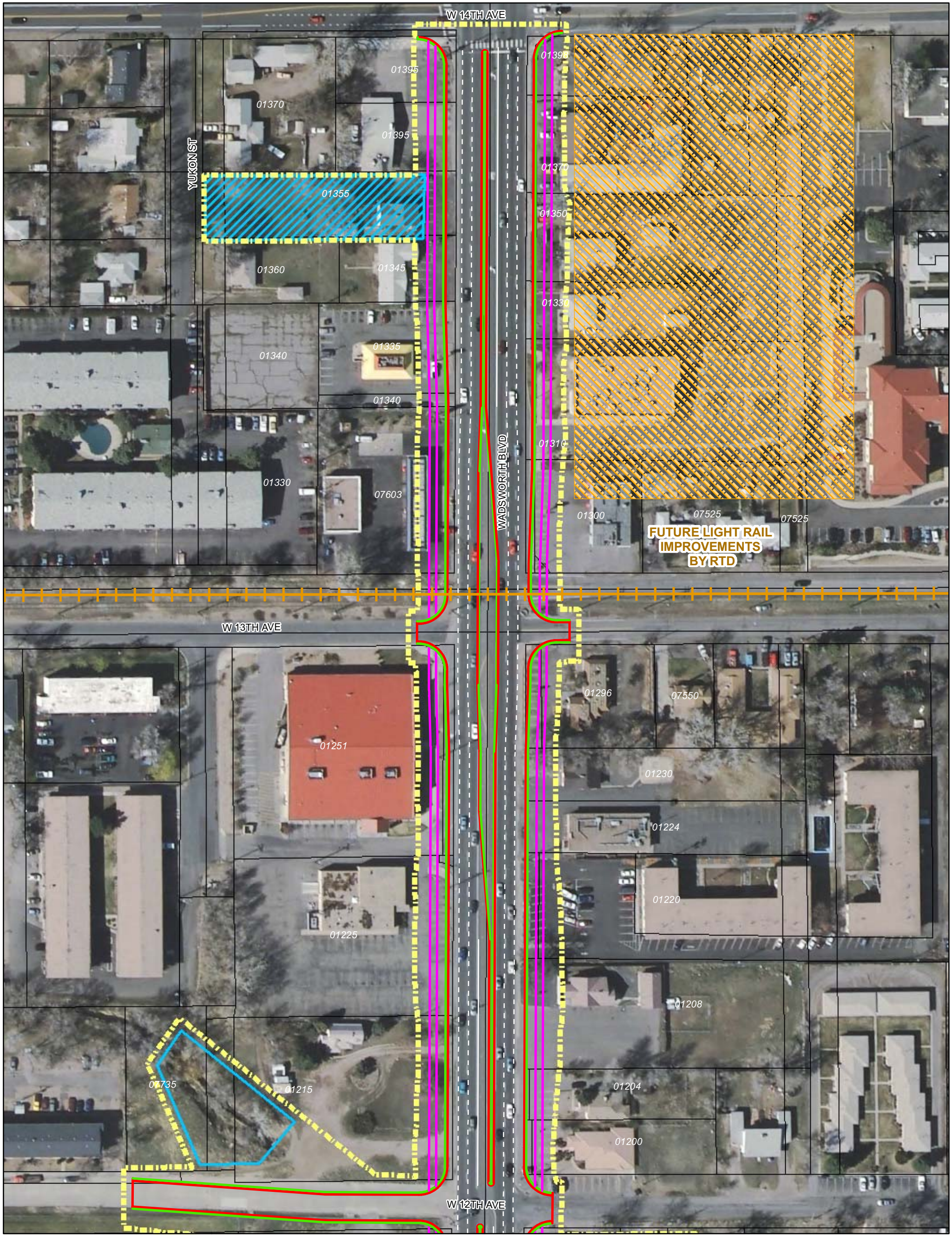
US 6 and Wadsworth Environmental Assessment Preferred Alternative Preliminary Design MAP 8



Notes:

1. Construction limits reflect the estimated edge of improvements including a 10-foot buffer for the construction work zone.
2. Additional impacts, beyond those shown, may result from noise walls & water quality treatment features. The locations of these features are still being studied.

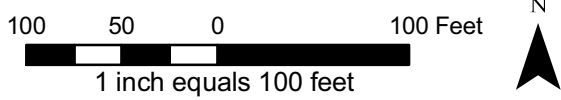




FUTURE LIGHT RAIL IMPROVEMENTS BYRTD



- | | |
|---------------------|---|
| Sidewalk | Drainage Channel |
| Curb and Gutter | Detention Pond |
| Lane Striping | Jefferson County Assessor Parcel Data |
| Construction Limits | Street Address of Property (with leading zeros) |
| Bridge Outline | |



US 6 and Wadsworth Environmental Assessment Preferred Alternative Preliminary Design MAP 9

- Notes:
1. Construction limits reflect the estimated edge of improvements including a 10-foot buffer for the construction work zone.
 2. Additional impacts, beyond those shown, may result from noise walls & water quality treatment features. The locations of these features are still being studied.

